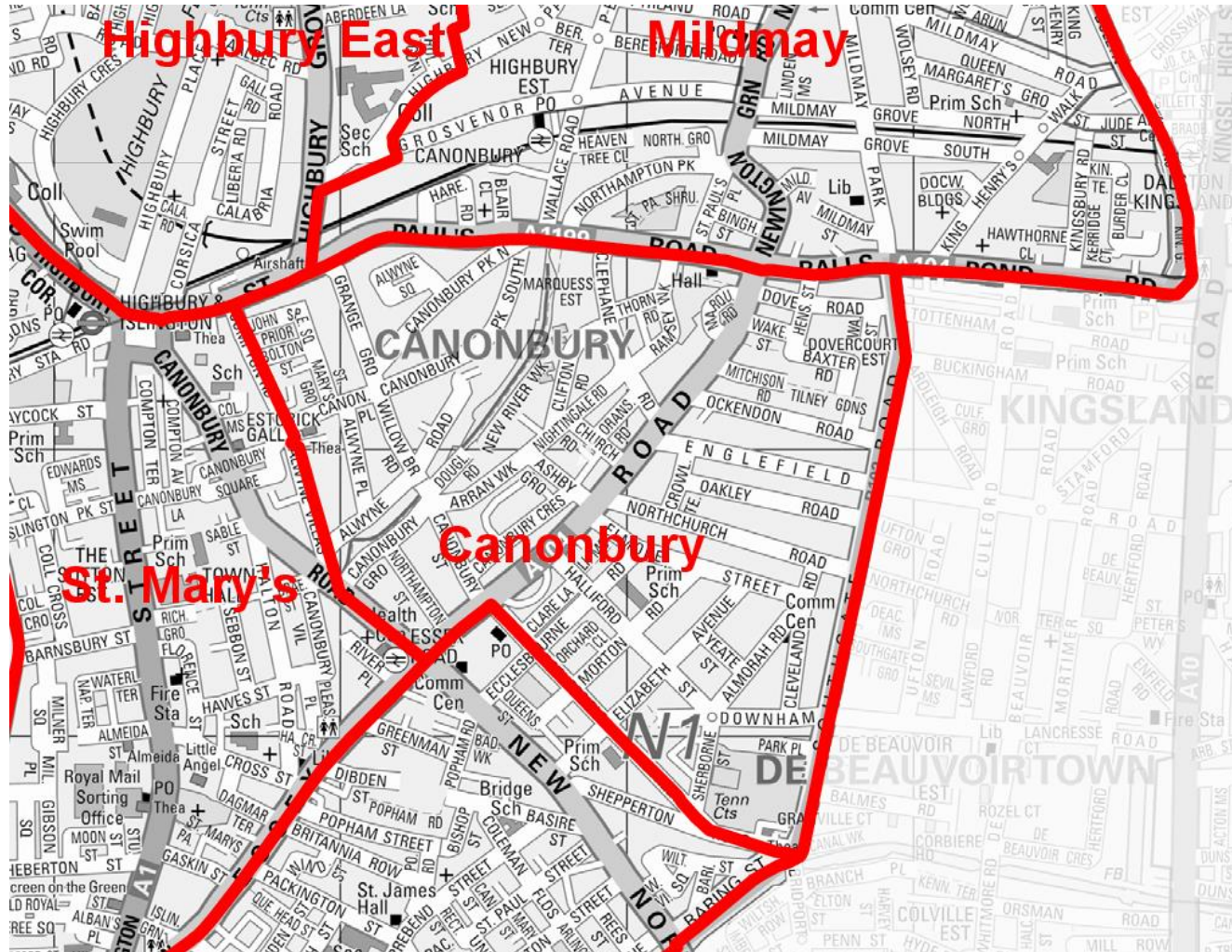


My top 11 trees in Canonbury

Gavin Rees

Canonbury Ward Boundary



(1) London planes - New Romford House, next to 53 Mitchison Road



Group of London planes (*Platanus x acerfolia*) located on Dover Court Estate



A good example of how existing trees can be retained and protected as part of development proposals. They help to integrate the block into the surrounding landscape and provide a sense of site maturity.

(2) London plane - Canonbury House (Canonbury Place), rear garden



Landmark tree of striking proportions enhancing a classic vista



London plane (*Platanus x acerifolia*)
TPO ref – T4 of TPO 330/2007

(3) Italian alder – Elmore Street build-out



Large canopied tree group utilising a highways build out



Mixed tree group including Italian alder (*Alnus cordata*) + Pin oak (*Quercus palustris*)

(4) Liquidambar – outside 22 Canonbury Park North

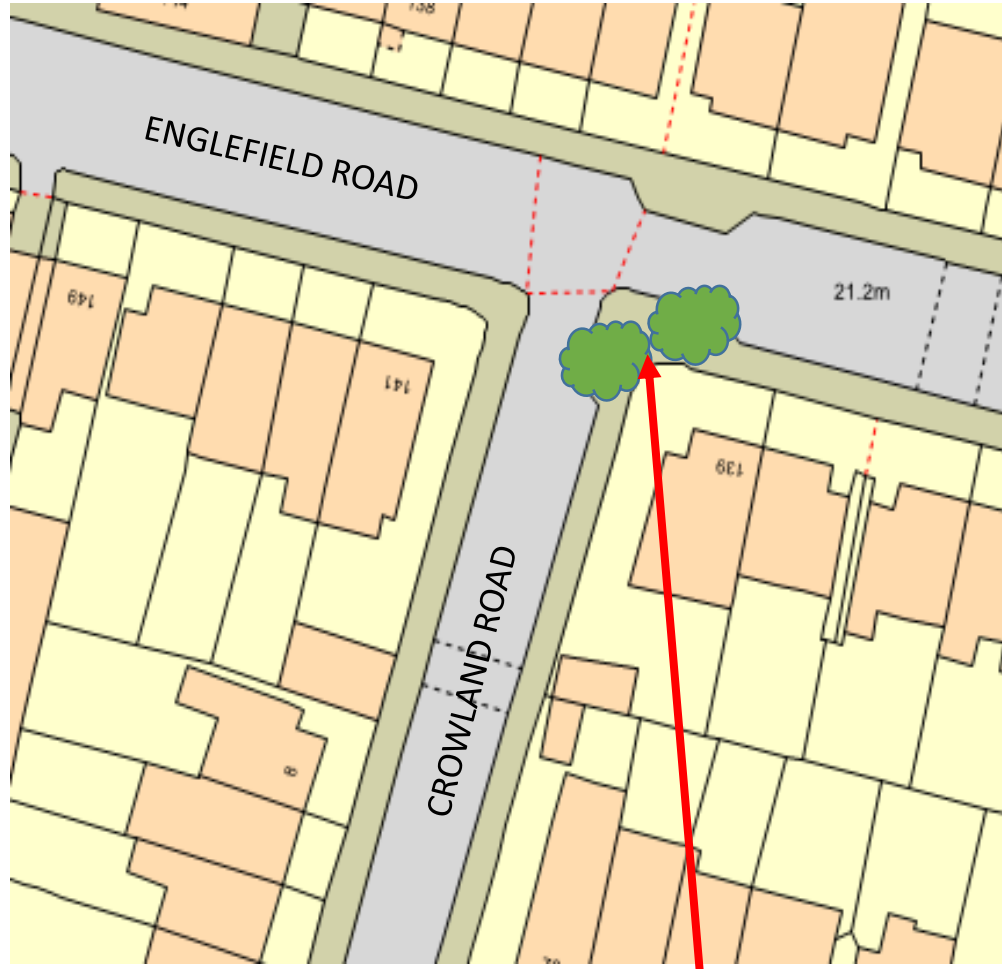


Fantastic autumn colour (in the autumn ;-)



Liquidambar styraciflua (sweetgum) – located on public highway

(5) Himalayan birch – outside 139 Englefield Road



2x Himalayan birch (*Betula utilis* var *Jacquemontii*) located within the public highway



Included due to their striking bark and winter interest

(6) Limes – front garden 36 St Mary's Grove



Their lampstand form is created by regular crown reduction pruning



3 x Limes (*Tillia* species) TPO refs: T11-T13 of TPO 309/2007

(7) London plane – rear garden 60 Canonbury Road



Another colossal London plane standing at the SW gateway to Canonbury

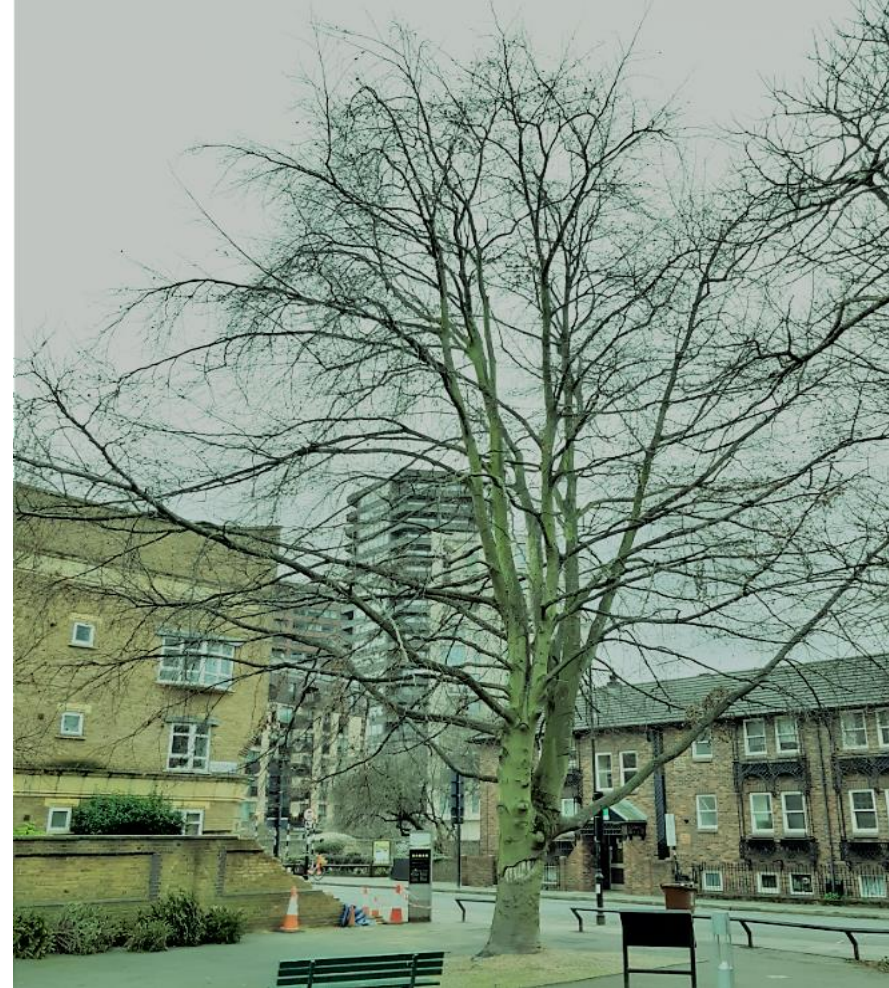


London plane (*Platanus x acerifolia*)
TPO ref – T3 of TPO 352/2007

(8) Beech – Rosemary Gardens Park



Beech (*Fagus sylvatica*) located 20m West of the historic Rosemary Branch P.H.

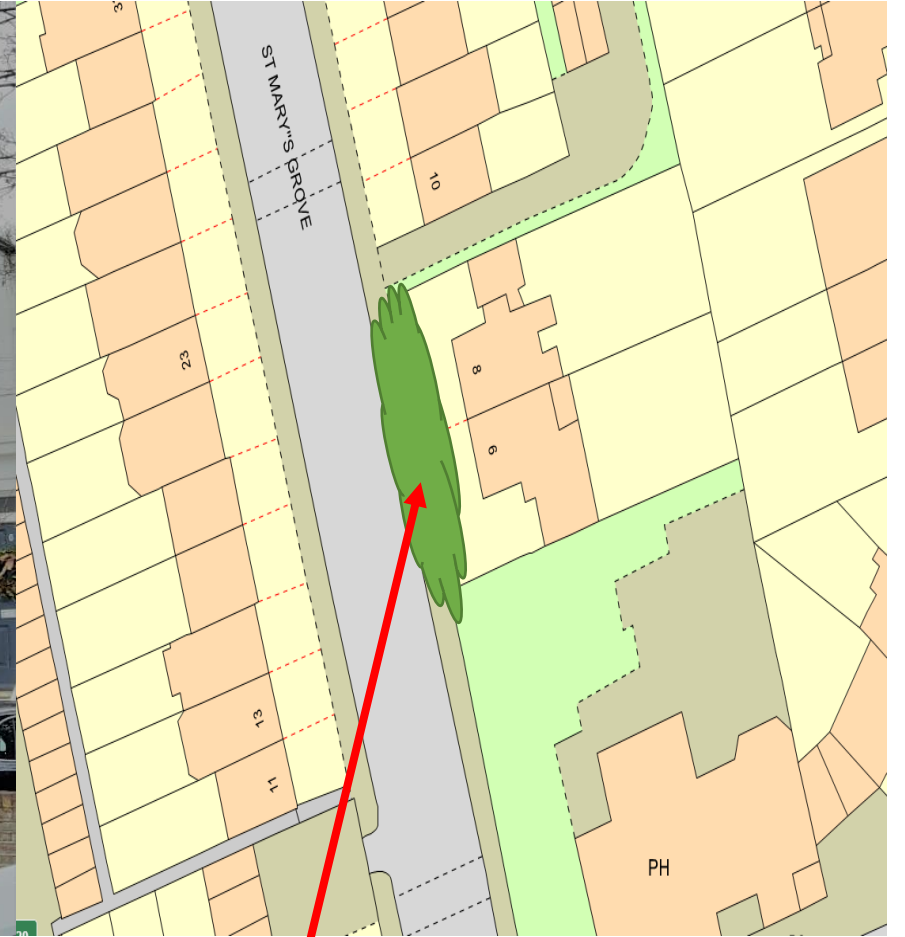


Although not quite mature this beech tree still makes an important landscape presence. Check out the sinister engraved grin near the base.

(9) Limes – front garden 6-8 St Mary's Grove

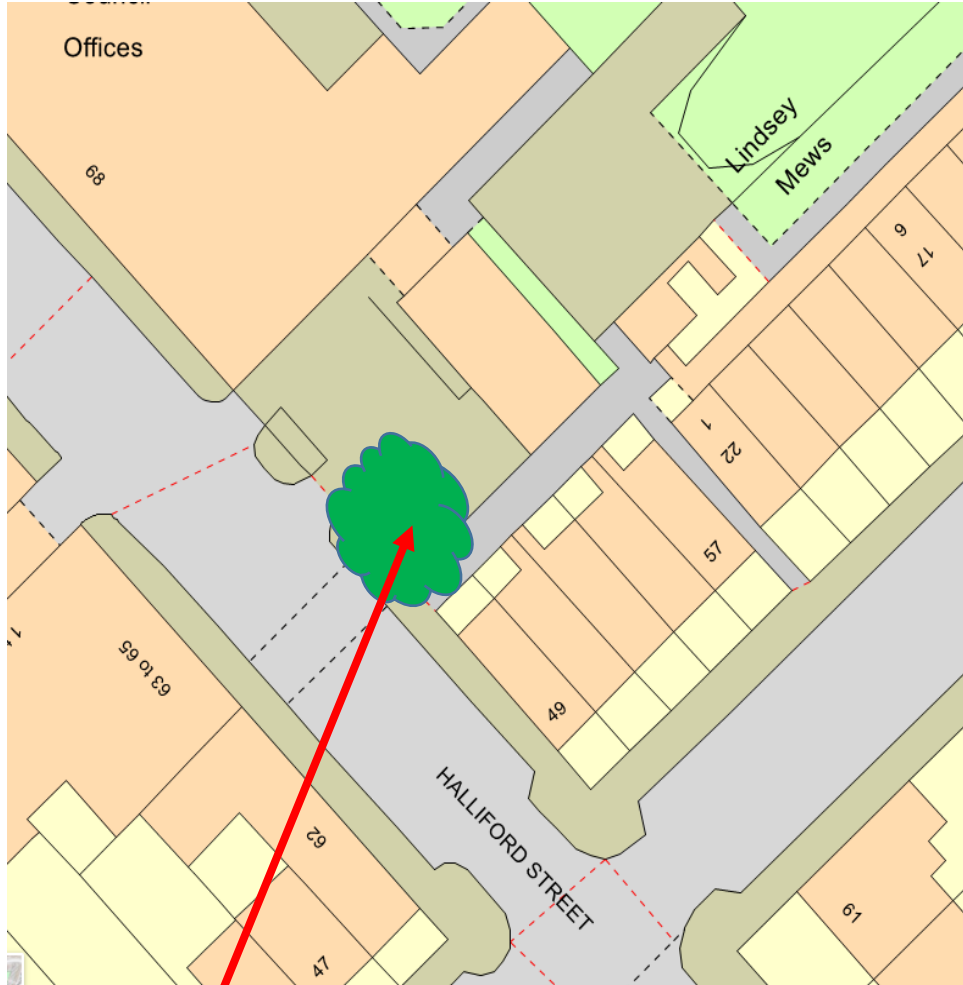


Good example of historical lime pollarding



Lime group (*Tilia* species)
TPO ref – T1-T9 of TPO 297/2007

(10) Silver birch – front garden 68a Halliford Street

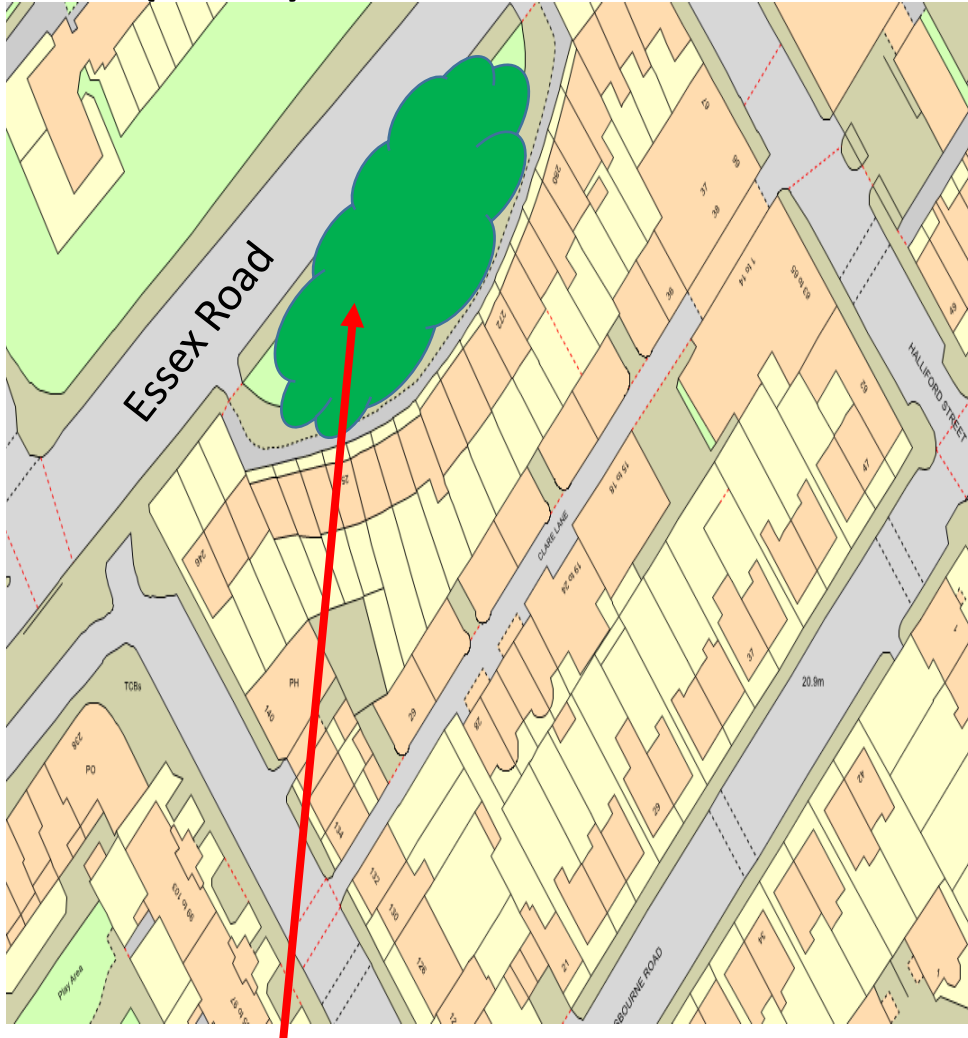


2x Silver birch (*Betula pendula*)



Trees contributing and enhancing contemporary architecture

(11) Limes - Annette Crescent Open Space



Lime tree group in Council Open Space



Line of historical lime pollards providing screening + site integration